

CONSENT AUTHORITY STAMP

| | | | |
|-----|------------|------------------|----|
| | | | |
| | | | |
| | | | |
| | | | |
| A | 03/10/2024 | DA DOCUMENTATION | MA |
| REV | DATE | DESCRIPTION | BY |

DO NOT SCALE THESE DRAWINGS,
READ ALL DEMENSIONS SHOWN.

ALL RIGHTS RESERVED.
THESE DRAWINGS, PLANS AND SPECIFICATION
AND COPYRIGHT ARE THE PROPERTY OF
WARATAH GROUP AND MUST NOT BE USED,
REPRODUCED OR COPIED WHOLLY OR IN PART
WITHOUT THE WRITTEN PREMISSION OF
WARATAH GROUP.



Waratah Group

Level 1
Building 3
20 Worth Street
Chullora NSW
2190 Australia

(02) 9758 7567
www.waratahcertifiers.com.au

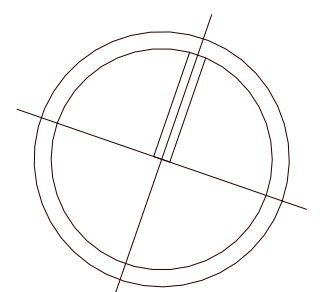
CONSTRUCTION OF A DOUBLE STORY CHILDCARE, FRONT
FENCE AND BASEMENT CARPARK

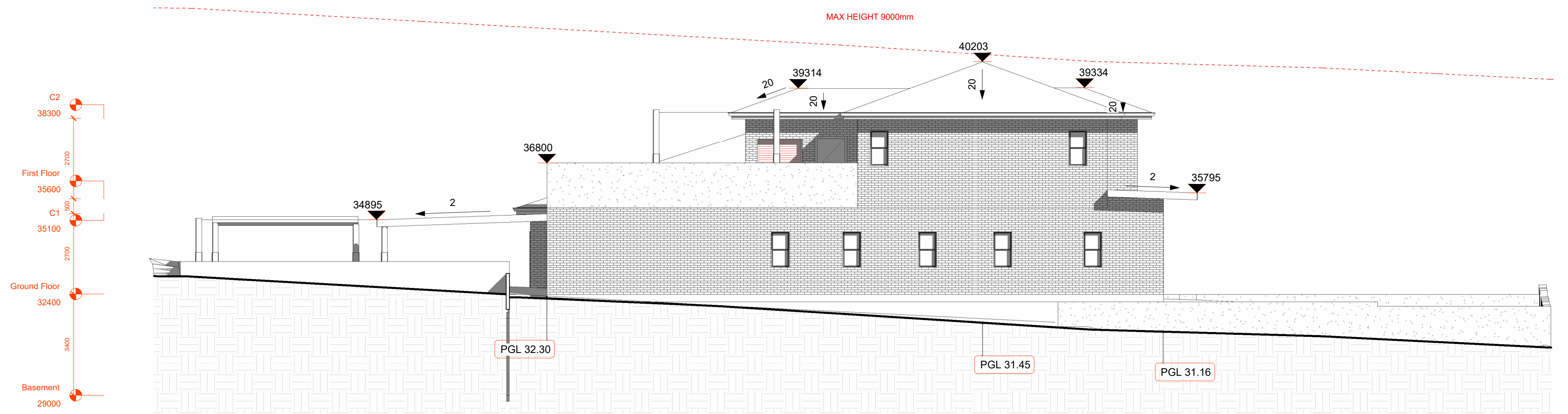
42 - 44 NORFOLK ROAD, GREENACRE, 2190, NSW

Proposed Site Plan

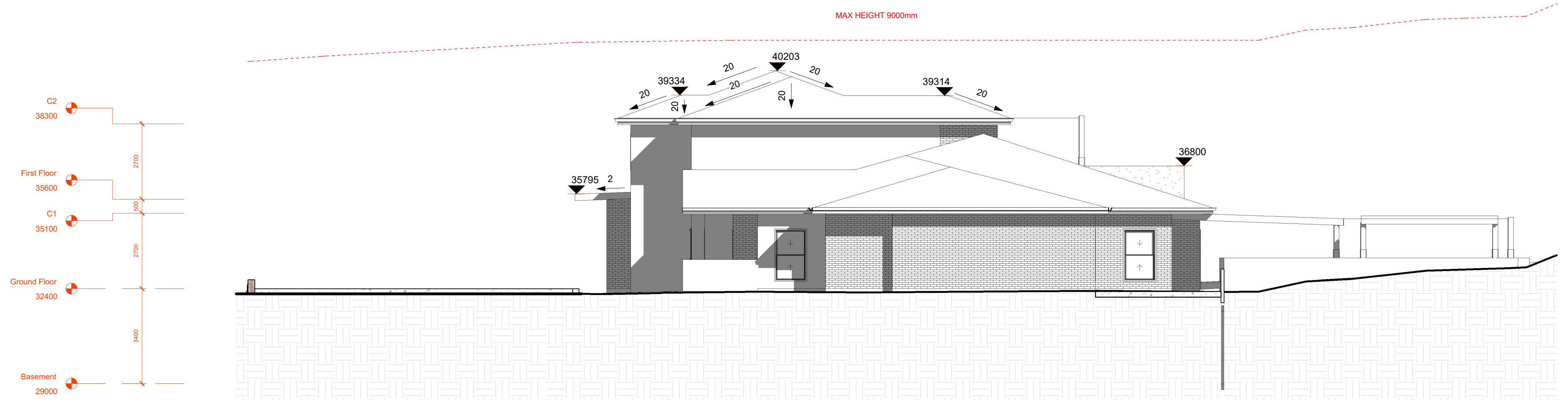
| | |
|------------------------|--------------------------|
| Job Number D2024/06 | Drawing Number A04.01 |
| Scale 1 : 100 | Page Total TBC |
| Drawn By MA | Checked By AA |
| Date 03/10/2024 | Revision A |

Sheet scale
A1





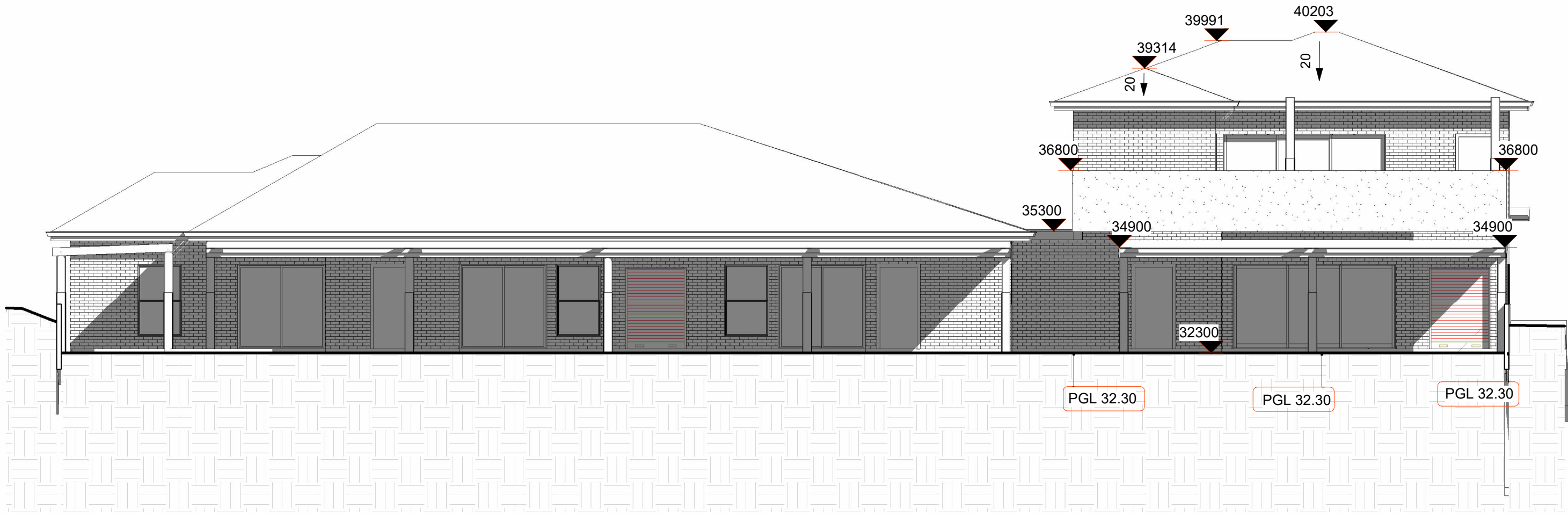
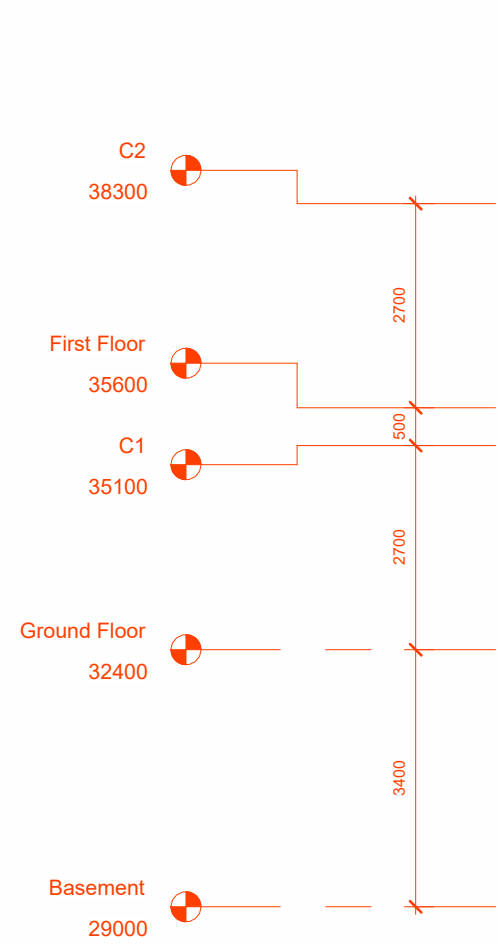
1 West
SCALE: 1 : 100



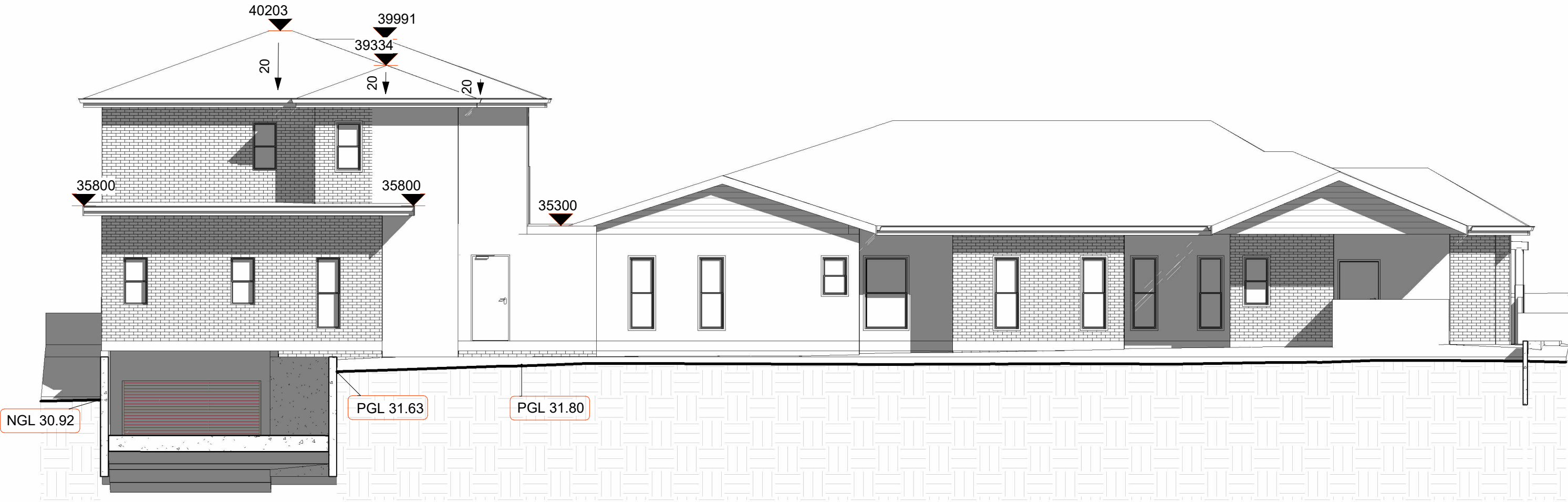
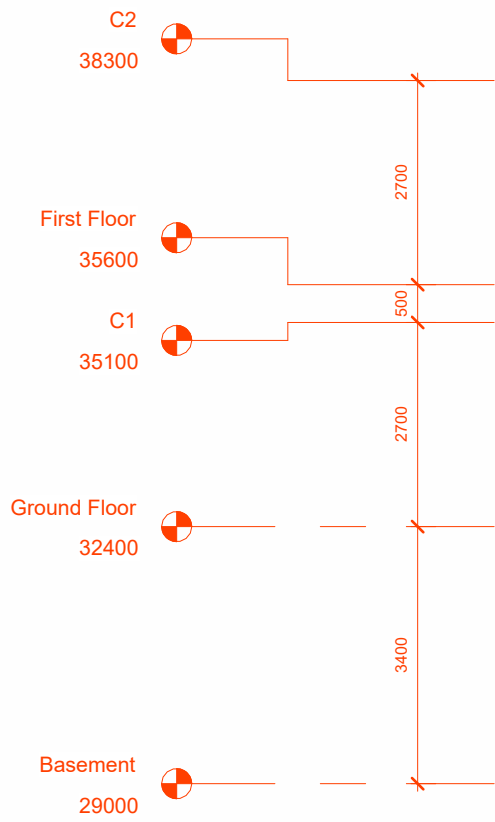
2 East
SCALE: 1 : 100

CONSENT AUTHORITY STAMP

| | | | | | | | | | | |
|-----|------------|------------------|----|--|--|--|---|------------------------|--------------------------|---|
| | | | | DO NOT SCALE THESE DRAWINGS, READ ALL DEMENSIONS SHOWN. ALL RIGHTS RESERVED. THESE DRAWINGS, PLANS AND SPECIFICATION AND COPYRIGHT ARE THE PROPERTY OF WARATAH GROUP AND MUST NOT BE USED, REPRODUCED OR COPIED WHOLLY OR IN PART WITHOUT THE WRITTEN PREMISSION OF WARATAH GROUP. |  Waratah Group | Level 1 Building 3 20 Worth Street Chullora NSW 2190 Australia (02) 9758 7567 www.waratahcertifiers.com.au | CONSTRUCTION OF A DOUBLE STORY CHILDCARE, FRONT FENCE AND BASEMENT CARPARK | Job Number D2024/06 | Drawing Number A05.06 | Sheet scale A1 |
| | | | | | | | 42 - 44 NORFOLK ROAD, GREENACRE, 2190, NSW | Scale 1 : 100 | Page Total TBC |  |
| A | 03/10/2024 | DA DOCUMENTATION | MA | | | | | Drawn By MA | Checked By AA | |
| REV | DATE | DESCRIPTION | BY | | | | Elevations - 1 | Date 03/10/2024 | Revision A | |



1 North
SCALE: 1 : 100



2 South
SCALE: 1 : 100

CONSENT AUTHORITY STAMP

| | | | |
|-----|------------|------------------|----|
| | | | |
| | | | |
| | | | |
| | | | |
| A | 03/10/2024 | DA DOCUMENTATION | MA |
| REV | DATE | DESCRIPTION | BY |

DO NOT SCALE THESE DRAWINGS,
READ ALL DEMENSIONS SHOWN.

ALL RIGHTS RESERVED.
THESE DRAWINGS, PLANS AND SPECIFICATION
AND COPYRIGHT ARE THE PROPERTY OF
WARATAH GROUP AND MUST NOT BE USED,
REPRODUCED OR COPIED WHOLLY OR IN PART
WITHOUT THE WRITTEN PREMISSION OF
WARATAH GROUP.



Waratah Group

Level 1
Building 3
20 Worth Street
Chullora NSW
2190 Australia

(02) 9758 7567
www.waratahcertifiers.com.au

CONSTRUCTION OF A DOUBLE STORY CHILDCARE, FRONT
FENCE AND BASEMENT CARPARK

42 - 44 NORFOLK ROAD, GREENACRE, 2190, NSW

Elevations - 2

| | | |
|------------------------|--------------------------|-------------------|
| Job Number D2024/06 | Drawing Number A05.07 | Sheet scale A1 |
| Scale 1 : 100 | Page Total TBC | |
| Drawn By MA | Checked By AA | |
| Date 03/10/2024 | Revision A | |

